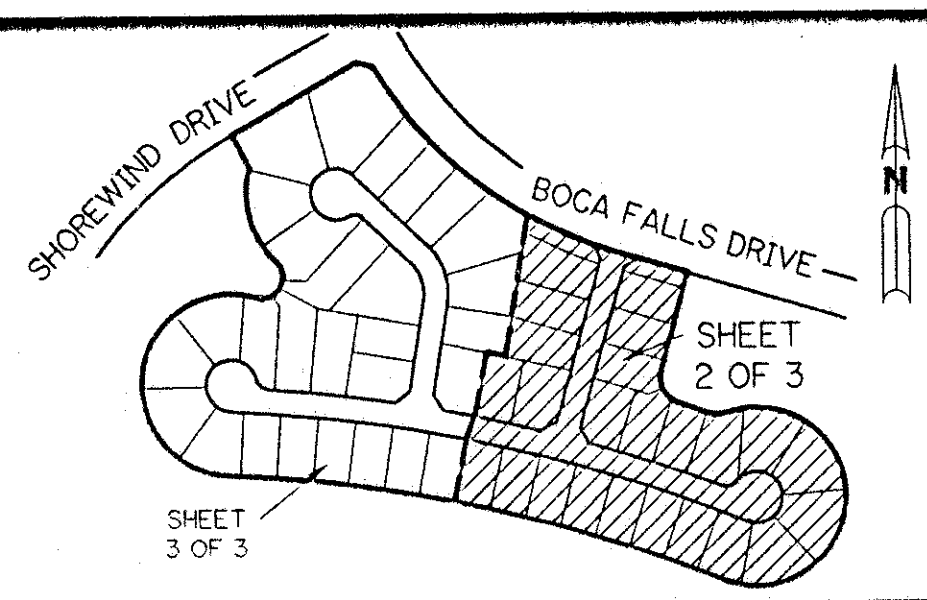


# BOCA FALLS - PARCEL "T"

# 120

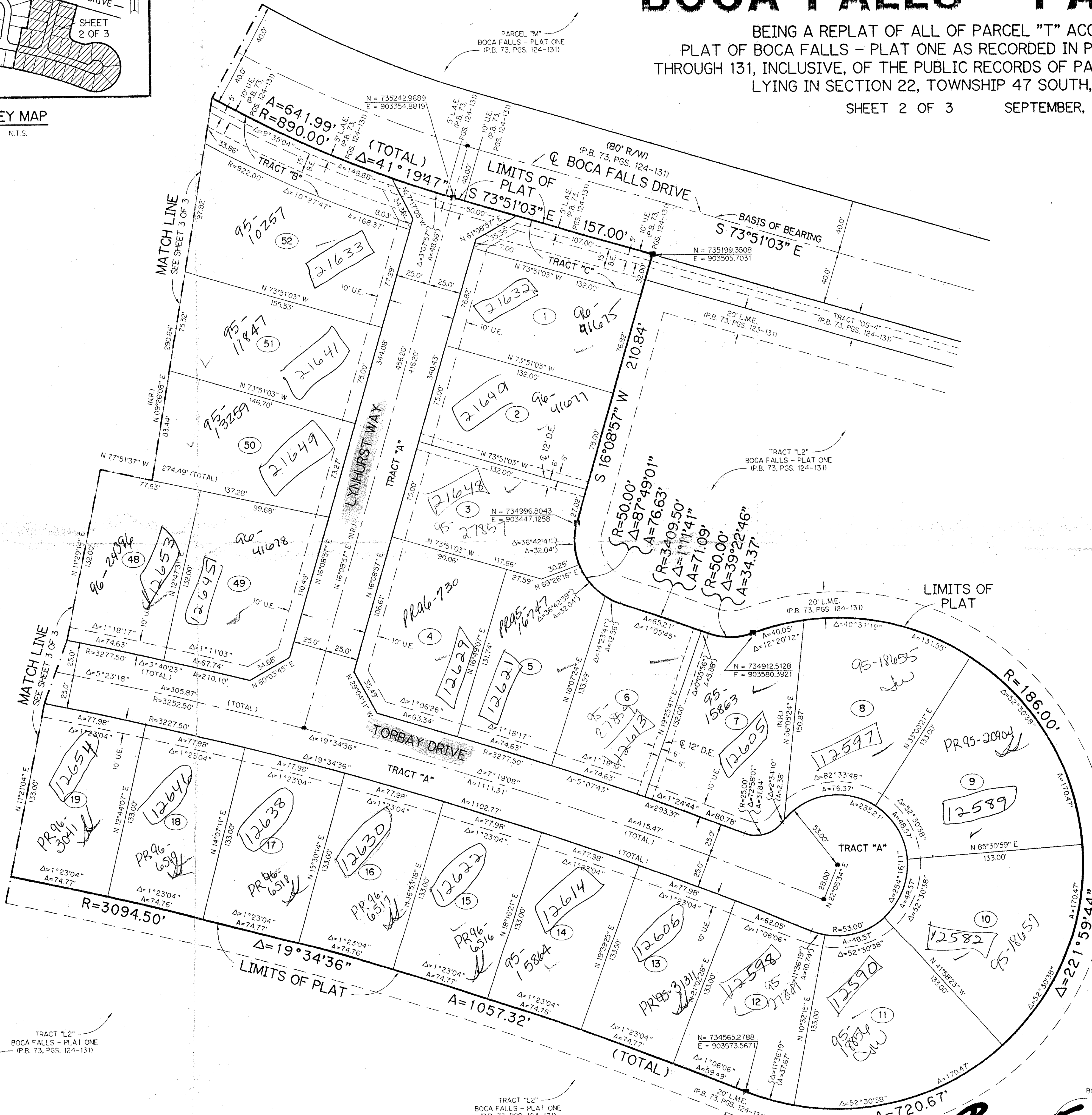
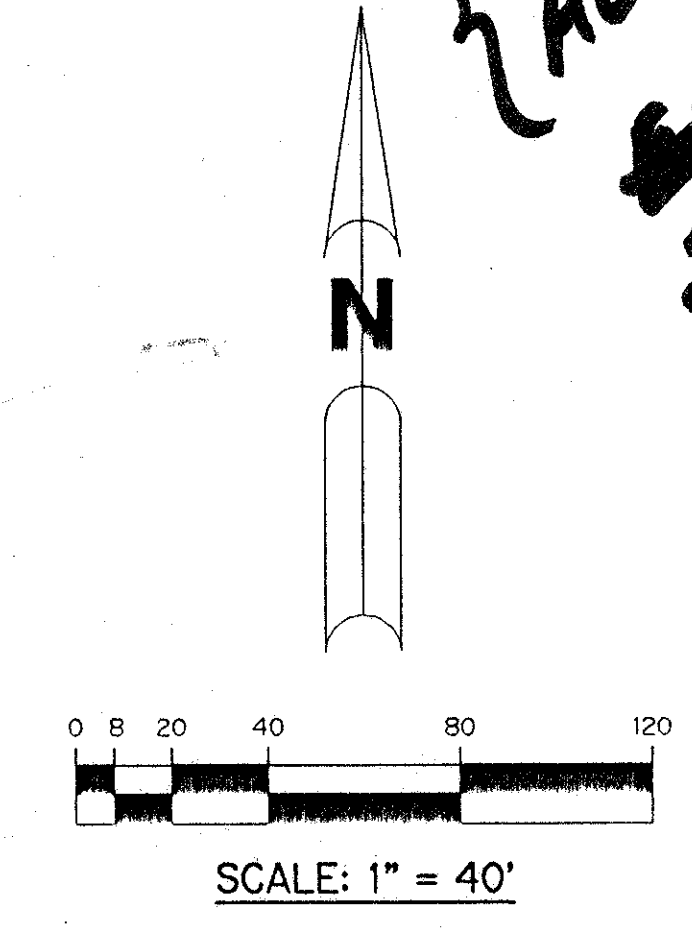
BEING A REPLAT OF ALL OF PARCEL "T" ACCORDING TO THE PLAT OF BOCA FALLS - PLAT ONE AS RECORDED IN PLAT BOOK 73, PAGES 124 THROUGH 131, INCLUSIVE, OF THE PUBLIC RECORDS OF PALM BEACH COUNTY, FLORIDA. LYING IN SECTION 22, TOWNSHIP 47 SOUTH, RANGE 41 EAST

SHEET 2 OF 3 SEPTEMBER, 1994



KEY MAP N.T.S.

*Handwritten note:* TOT. 80-478  
ROADS \$1189.00 PER UNIT  
ALLOC. # 0001  
FOR ROADS, SCHOOLS & PARKS  
5/3/13/m



- LEGEND:**
- - PERMANENT REFERENCE MONUMENT, PLS #4213
  - - PERMANENT CONTROL POINT, PLS #4213
  - Δ - DELTA ANGLE
  - A - ARC LENGTH
  - B.E. - BUFFER EASEMENT
  - D.E. - DRAINAGE EASEMENT
  - L.M.E. - LAKE MAINTENANCE EASEMENT
  - N.R. - NOT RADIAL
  - N.T.S. - NOT TO SCALE
  - P.B. - PLAT BOOK
  - P.G.S. - PAGES
  - P.L.S. - PROFESSIONAL LAND SURVEYOR
  - R - RADIUS
  - R/W - RIGHT-OF-WAY
  - U.E. - UTILITY EASEMENT
  - N = 1000.000
  - E = 1000.000
  - STATE PLANE COORDINATES

742-778  
SUBDIVISION Boca Falls-Parcel T  
BOOK 74 PAGE 120  
FLOOD ZONE AO-1 FLOOD MAP # 100B  
QUAD # 69 ZONING RT  
SE 80-47 ZIP CODE 33428  
PUR NAME Bay Winds PUD

PARCEL T  
BAY WINDS PUD

## 0201-019

THIS INSTRUMENT PREPARED BY  
PERRY C. WHITE P.L.S. 4213 STATE OF FLORIDA  
LAWSON, NOBLE AND ASSOCIATES, INC.  
ENGINEERS PLANNERS SURVEYORS  
WEST PALM BEACH, FLORIDA

74/120

# BOCA FALLS - PARCEL "T"